

WAVERLY

INSPIRATIONS

Exclusively at Walmart



DIY DECORATING A BEGINNER'S GUIDE

Everything you need to know about Waverly Inspirations Chalk, Super Premium, and Multi-Surface Paints, Stencils and Tools.

ABOUT WAVERLY INSPIRATIONS

Waverly is well-known in the world of home decorating, as it is America's number one name in sophisticated home-decorating fabrics. As a home decorating authority, Waverly, has been designing stylish fabrics for over 90 years while at the same time, providing real-world decorating advice to the eager-to-learn home decorator.

Trends for the Waverly Inspirations product lines are often pulled from vast archives of stylish fabric designs along with a fresh, yet classic, vision for home decor. Gorgeous fabrics designed with fun patterns, bold personalities, and vivid colors all at the center of the decorating hub, provided inspiration for Plaid Enterprises to create three amazingly different home décor paint formulas, beautiful stencil designs that effortlessly coordinate with Waverly Inspirations fabrics and easy-to-use tools all with the home decorator in mind. Not only is the total Waverly Inspirations home decorating product line easily affordable, it is easily accessible exclusively at Walmart and Walmart.com

There is so much for today's DIY enthusiast to learn about Waverly Inspirations. What exactly are the three formulas of home décor paint and how or when do you use them? What are Waverly Inspirations Home Décor Stencils and what is the best way to apply that stencil design to a piece of furniture? What are the best paint applicator tools to use so that painting and stenciling is a breeze?

Let's dive into the Waverly Inspirations Decorating System and see how fabrics, paints, stencils and easy-to-use tools all work together, shall we? Let's get busy learning and doing!



TABLE OF CONTENTS

Renowned for its line of sophisticated and elegant home decor textiles, Waverly has established itself as a home decorating authority. For over 90 years, Waverly has been designing stylish, fabrics while also providing real-world decorating expertise.

Introduction	2
Waverly Inspirations Decorating System	3
Miscellaneous Supplies	4
Surface Preparation	4
Waverly Inspirations Application Tools	5
Waverly Inspirations Stencils	6

WAVERLY INSPIRATIONS CHALK

Product Overview	7-9
Farm Fresh Vintage Chest	10-11
Cottage Rocking Chair	12-13
Geo Modern Dresser	14-15
Garden Inspired Wall Art	16-17

WAVERLY INSPIRATIONS SUPER PREMIUM PAINT

Product Overview	18-19
1950's Secretary Goes Modern	20-21
Bright and Bold Dresser	22-23
Made with Love Pillows	24-25
Apothecary Style Side Table	26-27
Town and Country Nightstand	28-29

WAVERLY INSPIRATIONS MULTI-SURFACE PAINT

Product Overview	30-31
Sleek Contemporary End Table	32-33
Glitzy Serving Tray	34-35
Metallic Finish Candlesticks	36-37
About the Designers	38
Social Media	38

THE WAVERLY INSPIRATIONS DECORATING SYSTEM

Ever wanted to transform a space in your home from drab to fab? With Waverly Inspirations Decorating System, updating your home is easy even if you feel you are not talented or artistic. And with Waverly Inspirations, there is a huge variety of design and product options to select from.



THE WAVERLY INSPIRATIONS DECORATING SYSTEM IS SIMPLE TO FOLLOW:

- Begin by identifying areas to be changed or updated. It may be fulfilling the desire for new fabrics sewn into curtains or pillows, a fresh look at artwork, a different color of paint on a favorite dresser or even a complete room make-over.
- Next, identify your tastes, styles and color palettes by taking a look at Waverly Inspirations fabrics available at Walmart. You will find a wide variety of design styles and color palettes to choose from, everything from traditional to contemporary.
- Once fabrics have been chosen, use those textiles as inspiration to select colors from. Under the Waverly Inspirations brand, you will find three different paint formulas: *Waverly Inspirations Chalk*, *Waverly Inspirations Super Premium* and *Waverly Inspirations Multi-Surface Paints*. Although formulated completely different from one another, all three paint formulas are easy to use, clean up quickly with soap and water, and offer a complete color selection making it easy to coordinate with selected fabrics. All three Waverly Inspirations paint formulas are described in detail within this eBook.

- Once the colors and formulas of paints have been chosen based on the fabric design inspiration, begin to think about embellishments for the chosen project. Think about stenciling a coordinating design onto painted dresser, or stenciling over fabrics creating artwork that can be mounted or framed, or simply accent a lampshade with a stenciled design. Waverly Inspirations Stencils are available in a small format size for accenting smaller projects and in a larger size to be used on walls or furniture. All of these stencils were created from the variety of Waverly Inspirations fabric designs.
- And lastly, be sure to review the complete assortment of brushes and paint applicator tools, all created to make the design redo a snap!

With the proper design inspiration, paint formula, color selection, stencil embellishments and of course, the proper tools, all created under the Waverly Inspirations brand, a piece of furniture, a small area, or an entire room can be transformed in a very short time with professional looking results!



MISCELLANEOUS SUPPLIES

These are everyday household items you may need .

- Brush Basin or container for water
- Paper towels
- Soft, lint-free, cotton cloth
- Foam plates or bowls (to be used as palettes)
- Craft knife (to open heat seal on bottle)
- Stencil Tape or painter's tape (for masking borders and stenciled projects)
- Pencil
- Ruler
- Medium - fine grit sandpaper
- Tack cloth
- Household glass cleaner



SURFACE PREPARATION

Depending on the surface to be decorated, it is possible some preparation may be required.

- **Unfinished Wood** - Wipe the surface clean removing dust. If the unfinished wood surface is rough, a light sanding with medium grit sandpaper following the natural grain of the wood might be necessary.
- **Finished Wood** - No need to sand, strip or prime a previously finished wood surface. However, it should be clean of dust, dirt or grease by wiping down with household glass cleaner. However, if previously finished furniture no longer has a varnish finish, a stain blocking primer should be applied prior to painting.
- **Metal** - Wash all new metal surfaces in warm, soapy water; allow to thoroughly dry. Moisten a paper towel or soft cloth with distilled white vinegar and wipe over surface then allow to dry.
- **Papier Mache** - No prep is necessary when decorating papier mache surfaces; simply wipe to remove dust.
- **Fabric** - Prewash fabric to remove sizing, dry and iron wrinkles without use of fabric softeners. Waverly Inspirations Chalk and Super Premium paint formulas should be used for decorative purposes only as they are not washable.
- **Terra Cotta** - No prep is necessary when decorating the exterior of terra cotta flower pots. The interior should be sealed to prevent moisture leaking through the wall of the flower pot.
- **Canvas** - No prep is necessary when decorating gessoed canvas surfaces; simply wipe to remove dust.
- **Cement** - Coat with distilled white vinegar (to neutralize lime), let dry, rinse, then allow to dry thoroughly. Waverly Inspirations paint formulas are not recommended for concrete areas subject to foot traffic such as a patio or garden walkway.
- **Rigid Plastic** - Wash plastic surfaces in warm, soapy water to remove existing dirt, dust, and grease. Allow to thoroughly dry.
- **Ceramic and Glass** - Wash in warm soapy water, rinse well then wipe with rubbing alcohol to remove remaining grease or soap residue. Waverly Inspirations Chalk and Super Premium paint formulas should be used for decorative purposes only.

WAVERLY INSPIRATIONS APPLICATOR TOOLS

The key to proper paint application is a combination of having the best tool at hand as well as knowing how to properly use them. Waverly Inspirations tools include several sizes and styles of brushes as well as a set of dense foam sponge wedges.

All Waverly Inspirations brushes are manufactured with light gray dyed bristles which offer a neutral backdrop to the colorful Waverly Inspirations paint palettes. Each brush is made with natural, wood handles that are dipped in gorgeous colors. The brush handle finish is sleek and smooth and feels wonderful in your hand! Each metal ferrule is made with a functional crimp which keeps the ferrule firmly attached to the brush handle. And with all water based Waverly Inspirations paints, tool cleanup is a breeze with soap and water!



WAVERLY INSPIRATIONS BASIC BRUSH SET

- Set of four high quality nylon bristle brushes. Designed for heavy paint load yet maintain their shape.
- Perfect for basecoating small areas, painting designs and touching up painted areas.
- Designer natural wood handles dipped in gorgeous salmon color.
- Conveniently packaged No. 6 round, 1/2" angle brush, 3/4" flat brush and 3/4" chip brush



WAVERLY INSPIRATIONS DETAILING BRUSH SET

- Set of five smaller sized high quality nylon bristle brushes
- Designed for detail painting while holding their shape.
- Designer natural wood handles dipped in beautiful light blue color.
- Conveniently packaged: No. 2, 6 flat brushes, No. 10/0 spotter brush, No. 3 round brush and No. 1 liner brush.



WAVERLY INSPIRATIONS WIDE BRUSH SET

- Set of four high quality nylon bristle brushes manufactured to withstand heavy paint loads all while maintaining the brush's original shape.
- Best used for covering larger project areas.
- Can be used to basecoat or decorative paint areas.
- Designer natural wood handles dipped in beautiful yellow color.
- Conveniently packaged: 1" flat brush, 1/2" flat brush, 3/4" angle brush and No. 10 round brush.



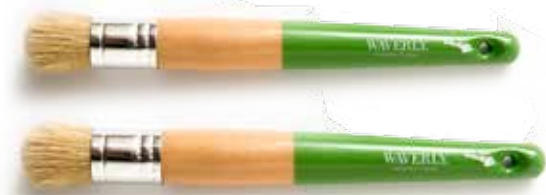
WAVERLY INSPIRATIONS BASECOATING BRUSH

- High quality nylon bristle brush designed to accept heavy paint load.
- Perfect for basecoating large surfaces as well as applying brush-on varnish.
- Designer natural wood handle dipped in beautiful blue paint.
- One 2" wide flat brush.



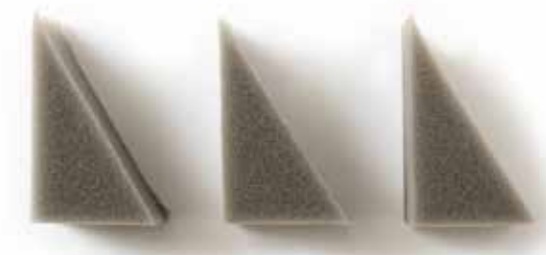
WAVERLY INSPIRATIONS STENCIL BRUSHES

- Set of three high quality natural bristle stencil brushes.
- Natural bristles are firm yet flexible creating the perfect combination for stenciling.
- Designer natural wood handles dipped in beautiful purple color.
- Conveniently packaged: 3/8", 1/2" and 5/8" brush.



WAVERLY INSPIRATIONS INDIVIDUAL STENCIL BRUSHES

- High quality natural bristles that are firm yet flexible; the winning combination for the perfect stencil brush.
- Designer natural wood handles dipped in beautiful green color.
- Sold individually as a 5/8" or a 1" stencil brush.
- Waverly Inspirations paints clean up with soap and water while wet.



WAVERLY INSPIRATIONS SPONGE WEDGES

- High dense foam sponge wedges are perfect as paint applicators or stenciling tools.
- Medium gray color offers "neutral" color backdrop for colorful Waverly Inspirations paints.
- Available in convenient package of three sponge wedges.
- Waverly Inspirations paints clean up with soap and water while wet.



WAVERLY INSPIRATIONS STENCILS

- Created for active DIY enthusiasts wishing to coordinate home décor projects using both Waverly Inspirations Paints with Waverly Inspirations Fabric.
- Attractive, on-trend stencil designs inspired by Waverly Inspirations Fabric.
- Perfect for any size home décor project, available in 6" x 6" and 12" x 12" format.
- Packaging provides color palette suggestions to coordinate with Waverly Inspirations Fabric swatches.
- Clear, see-thru Mylar allows for perfect design placement and easy-to-repeat design alignment.
- Gloss surface allows for easy stenciling as paint glides over stencil.
- Clean up with soap and water while wet.



WAVERLY INSPIRATIONS ALPHABET STENCILS

- Personalization is a snap with Waverly Inspirations Alphabet Stencils.
- Designed for the art of personalization on almost any surface.
- Two fonts: Basic and Serif are available in a 5" letter size.
- Two fonts: Serif and Script are available in 2" letter size.
- Heavyweight paper stencils can also be used as letter templates.



WAVERLY INSPIRATIONS CHALK

Waverly Inspirations Chalk is a highly pigmented acrylic-based paint designed to dry with a matte chalk finish. This specially formulated paint works perfectly when decorating new or slightly used furniture and home décor accents while creating truly beautiful statement pieces.

The full, rich color palette, of 28 colors, inspired by Waverly Inspirations Fabric, ensures that there is just the right color for everyone. However, this paint can also be intermixed creating gorgeous custom colors for any project. Waverly Inspirations Chalk can be used alone or layered with multiple colors to create a beautiful, distressed effect.

The Waverly Inspirations Chalk product line also includes products used to seal and protect a completed project. Waverly Inspirations Waxes available in three different wax finishes. Clear, White and Antiquing as well as a Matte Varnish all will seal and protect while providing a finishing touch.

Working with the correct tools when designing home decor projects is always important, and Waverly Inspirations offers high quality, beautifully crafted brushes which allow smooth, even paint application on flat surfaces as well as in tight, detailed areas.

- Perfect for home décor projects such as furniture and accessories like frames, artwork, trays and more.
- Great for multiple surfaces such as: wood, metal, papier mache, terra cotta and canvas. Can be used on fabric or glass for decorative purposes only.
- One 2 fl. oz. bottle covers 5 sq. ft., an 8 fl. oz. bottle covers 20 sq. ft. and a 16 fl. oz. bottle covers approximately 40 sq. ft.
- Wide mouth bottle allows for easy brush load/application.
- No priming, sanding, or stripping prior to painting is required.
- Dry to touch shortly after application, however, allow to dry two hours between paint applications.
- Fully cures to surface in 24 hours.
- Can be used for stenciling using Waverly Inspirations Stencils.
- Seal with water based Wax for velvety smooth finish or seal with Matte Varnish for a more durable matte finish.
- Non-toxic, water based.
- Clean up with soap and water.
- Made in America.





WAVERLY INSPIRATIONS WAXES

After completing a Waverly Inspirations Chalk decorated project, it is always a good idea to apply a finish to the surface to seal, protect, and preserve the completed project. One such way to apply protection is to use Waverly Inspirations Wax. Once applied and cured to the surface, Waverly Inspirations Wax provides a velvety, smooth-to-the-touch finish. The finished sheen can easily be adjusted, as the longer the application of wax is buffed, the higher the sheen is achieved.

- Three beautiful wax finishes, Clear, Antique and White, add rich texture and enhance surface details while protecting Waverly Inspirations Chalk decorated surfaces.
- Provides velvety smooth finish.
- Wide-mouth bottle for easy brush application.
- Waverly Inspirations Chalk can be mixed with Clear Wax to create custom color wax.
- Brush thin coat of wax onto thoroughly dry painted surface, allow wax to dry approximately 24 hours; then buff to desired sheen using soft, lint-free cloth.
- Fully cured to surface in seven days. Can be reapplied every 6 - 12 months or as needed for extra protection.
- An application of Clear Wax prior to finishing with either Antique or White Wax will make it easier to move the colored wax.
- Non-toxic, water based.
- Clean up with soap and water while wet.
- Made in America.

WAVERLY INSPIRATIONS VARNISH MATTE

Apply Waverly Inspirations Varnish as a protection coat over a completed Waverly Inspirations Chalk project. Waverly Inspirations Varnish dries to a matte finish that compliments the velvety smooth matte finish of the chalk decorated surface. Also, this varnish is perfect for home décor items that experience high traffic such as kitchen tables and chairs because it dries to a very durable finish.

- Beautiful matte finish varnish perfect for topcoating chalk surfaces that are not waxed for protection.
- Provides durable, non-yellowing, smooth finish for long lasting wear.
- Best to apply two to three applications allowing ample dry time between coats.
- For use indoors or outdoors.
- Dry time between applications depending on humidity, is two to four hours.
- Seals chalk finish to a water and mar resistant surface.
- Non-toxic, water based.
- Clean up with soap and water while wet.
- Made in America.



WAVERLY INSPIRATIONS CHALK BRUSH

If professional looking results are desired when revamping a piece of furniture, the use of the proper paint application tool is a MUST! Waverly Inspirations Chalk Brush is the perfect tool to use when applying Waverly Inspirations Chalk to large surfaces. Ergonomically designed, the Waverly Inspirations Chalk Brush is also the perfect tool for paint application, washes up nicely and can be reused many, many times.

- Perfect for painting large surface areas such as home décor furniture.
- Designed to hold a large amount of paint requiring less frequent brush loads.
- Sturdy bristles allow paint to be easily and smoothly applied in tiny grooves and tight detailed areas.
- Can also design with texture allowing brush marks to exist using a slip/slap application technique.
- 1 3/4" size with bright, red colorful handle fits smoothly and comfortably in hand.
- Wash brush in warm soapy water while paint is still wet.
- Allow bristles to dry between paint applications.

WAVERLY INSPIRATIONS CHALK AND WAX BRUSH COMBO

Perfect for smaller home décor chalk projects, the Waverly Inspirations Chalk and Wax Brush Combo is manufactured to the same high standards as the larger Waverly Inspirations Chalk Brush. The smaller chalk paintbrush with its oval shaped ferrule and smooth finished handle fits perfectly in your hand making all home décor projects easy to accomplish. The Waverly Inspirations Wax Brush with its round metal ferrule and stiff bristles work best when applying wax in tight crevices.

- Chalk and Wax Brush Combo is perfect for painting and waxing small surfaces.
- Firm bristles designed to hold large amounts of paint.
- Tapered shape of bristles allows paint to be spread easily.
- Bristles provide sturdiness to spread paint into tiny grooves and detailed surface areas.
- Each 1 1/8" wide brush with bright green paint handles, fit comfortably in hand.
- Wash brush in warm soapy water while paint is still wet.
- Allow bristles to dry between paint applications.





Waverly Inspirations Fabric

FARM FRESH VINTAGE CHEST

by Julie Lewis

Inspired by Waverly Inspirations great fabric designs, this gorgeous three drawer chest could be displayed in a bedroom, an entry way or even as a small buffet in the dining room. With this decorator piece, the subtle choice of its top color and the rich, deep brown base beautifully combine to create the illusion of time-worn age providing lots of character.

INSTRUCTIONS

1. Using a screwdriver, remove all drawer pull hardware, creating a smooth surface for painting.
2. Clean surface with household glass cleaner to remove dust, dirt and grease deposits.
3. Pour a small amount of Waverly Inspirations Chalk - Truffle into a foam bowl as a palette or load a Waverly Inspirations Chalk Brush directly from the paint bottle.



1

2

3

4. Apply Truffle to the entire surface of the three drawer chest using long, smooth brushstrokes. (photo 1) Clean the chalk brush with soap and water then allow both the brush and the painted chest of drawers time to thoroughly dry, approximately two hours.
5. Following instructions above, paint a topcoat of Waverly Inspirations Chalk - Celery over the Truffle base. (photo 2) Allow to dry two hours.

6. Sand along the edges of the chest, around the drawers and near the drawer pulls using a medium grit sandpaper to create a heavily distressed finish.
7. To seal and protect, apply Waverly Inspirations Clear Wax using a Wax Brush 24 hours after the topcoat of paint has been applied. Apply wax over the entire painted surface using a circular motion allowing the wax to penetrate the surface. (photo 3) Clean the wax brush, then allow 24 hours for waxed surface to completely dry.
8. Next, buff the entire waxed surface to desired sheen using a soft, lint-free cotton cloth. The longer the surface is buffed, the higher the sheen.
9. Replace hardware and allow surface to cure seven days before heavy use.

TIPS & TRICKS

- When distressing furniture, sand areas that would naturally show wear such as table edges, chair arms and seats as well as near drawer pulls or knobs.
- When creating a two-color layered effect, be sure to choose paint colors that offer contrast. If the colors are too similar in hue, the distressed difference may be too subtle.
- Until waxed surfaces are completely cured, keep free from moisture and heavy traffic.



SUPPLIES

- Thrift store find - small chest of drawers
- Waverly Inspirations Chalk - Truffle
- Waverly Inspirations Chalk - Celery
- Waverly Inspirations Clear Wax
- Waverly Inspirations Chalk and Wax Brush Combo
- Refer to page 4 for miscellaneous supplies, plus screwdriver (used to remove hardware)



Waverly Inspirations Fabric

COTTAGE ROCKING CHAIR

by Julie Lewis

Creating a soft, cottage vignette in your home has never been easier. Waverly Inspirations Chalk with its heavily pigmented formula, provides this wood rocker a beautiful matte chalk finish. When enhanced with White Wax, not only seals and protects; it also offers a soft, feminine cottage feel that can be created in a day or two!

INSTRUCTIONS

1. Lightly sand the entire unfinished wood rocking chair to smoothly even out any rough areas as well as open the pores of the wood. Wipe to remove sanding dust with a tack cloth.
2. Pour a small amount of Waverly Inspirations Chalk - Rhubarb into a foam bowl as a palette or load a Waverly Inspirations Chalk Brush directly from the paint bottle.
3. Apply the paint directly to the entire surface of the rocking chair being careful to cover all sides of the spindles as well as between each slat on the seat. (photo 1) Clean the chalk brush with soap and water then allow both the brush and the painted chair to thoroughly dry approximately two hours.
4. If needed, lightly sand to smooth out any rough areas, then reapply a second coat of Rhubarb. Allow to dry for 24 hours before sealing.



1

2

5. To seal and protect, apply Waverly Inspirations White Wax using a Wax Brush. Working a small section at a time, brush on the White Wax making sure to cover all areas including the dimensional grooves. (photo 2) While White Wax is still wet, lightly wipe over the surface with a soft, lint-free white cotton cloth to remove excess wax allowing some wax to stay in the grooves or dimensional curves. Clean the wax brush, then allow waxed surface 24 hours to dry.
6. Next, using a soft, lint-free cotton cloth, buff the entire waxed surface to desired sheen. The longer the surface is buffed, the higher the sheen.
7. Allow waxed rocking chair to cure seven days.

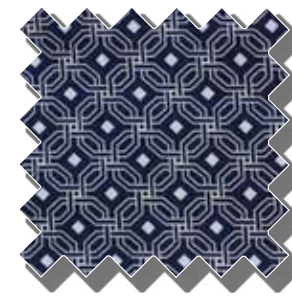
TIPS & TRICKS

- Simply by changing the color of this rocking chair, the entire feel or vibe can change from a feminine cottage feel to a nautical or beachy theme using Waverly Inspirations Chalk - Ocean! With the variety of Waverly Inspiration Chalk colors, the sky is the limit.
- When protecting a finished furniture piece with colored wax such as White Wax or Antique Wax, a beginner may find it easier to apply a layer of Clear Wax and buff well before applying colored wax. The layer of Clear Wax will seal the surface and allow additional time to move the colored wax about or settle into surface grooves.
- If repurposing a thrift store find, be sure to clean the rocker's surface well to remove dirt, dust and grease deposits before painting.
- Sew a comfy seat cushion or soft pillow using Waverly Inspirations fabrics to embellish and finish this sweet spindle back rocker.



SUPPLIES

- Unfinished wood spindle back rocking chair
- Waverly Inspirations Chalk - Rhubarb
- Waverly Inspirations Chalk and Wax Brush Combo
- Waverly Inspirations White Wax
- Refer to page 4 for miscellaneous supplies



Waverly Inspirations Fabric

GEO MODERN DRESSER

by Julie Lewis

The clean straight lines of this three drawer dresser combine well with the modern graphics of the Waverly Inspirations Mini Geo stencil. Together the straight lines and modern style stencil create the perfect decorated dresser offering storage with a stylish design. When using any color combination of Waverly Inspirations Chalk, easy-to-achieve professional looking results are possible!

INSTRUCTIONS

1. Create a smooth painting surface by removing all drawer hardware using a screwdriver; set aside hardware until project is complete. Remove drawers from the chest.
2. Clean surfaces with household glass cleaner to remove dust, dirt and grease deposits on the surface.
3. Pour a small amount of Waverly Inspirations Chalk - Cashew into a foam bowl as a palette or load a Waverly Inspirations Chalk Brush directly from the paint bottle.
4. Apply the paint to the exterior of the chest.



1

2

3

5. Prepare the drawer fronts with an application of Waverly Inspirations Chalk - Ink; clean chalk brush then allow surface to dry two hours. (photo 1)
6. When dry, lightly sand smooth using fine grit sandpaper. Wipe with a tack cloth to remove sanding dust, then reapply second applications of both Cashew and Ink. Allow to dry two hours.

7. Working with one drawer front at a time, stencil Waverly Inspirations Mini Geo design. Begin by measuring to find the center of each drawer front and mark with a pencil. Position the center of the stencil directly over the center mark; secure in place with stencil tape.
8. Using a dry brush technique, load a Waverly Inspirations Stencil Brush with Cashew by dipping the stencil brush into a small puddle of Cashew, then offload excess paint onto a paper towel. Begin stenciling using a circular clockwise/counter-clockwise motion until the entire design area has been stenciled. (photo 2) Lift to reveal the design. (photo 3) To complete the stenciled drawer front design, reposition the stencil to the right of the center stenciled design, align the stencil, tape in place, then stencil. Repeat for the left side of the drawer front. Then complete for each of the drawer fronts until all have been stenciled. Allow to dry 24 hours.
9. To seal and protect the dresser, apply an even coat of Waverly Inspirations Clear Wax using the Wax Brush; allow to dry overnight. Using a soft, lint-free cotton cloth, buff to desired sheen.
10. Replace drawer hardware. Allow seven days for curing before using heavily.

TIPS & TRICKS

- When stenciling, it is always best to use the dry brush technique referring to a stencil brush that has been loaded with paint and then offloaded so the brush bristles are almost dry. Stenciling with a "too-wet" brush can create paint smudges under the stencil design.
- Although Waverly Inspirations Chalk dries to the touch fairly quickly on the project surface, it is always important to allow thorough dry times allowing all moisture to evaporate.
- Try something new, create a time worn stenciled look. After stenciling, sand to distress the project surface including the drawer front edges creating the illusion that this project had been artistically created many years ago.



SUPPLIES

- Thrift store find - 3 drawer dresser
- Waverly Inspirations - Cashew
- Waverly Inspirations - Ink
- Waverly Inspirations Chalk and Wax Brush Combo
- 12" x 12" Waverly Inspirations Decor Stencil - Mini Geo
- Waverly Inspirations Stencil Brush Set
- Waverly Inspirations Clear Wax
- Waverly Inspirations
- Refer to page 4 for miscellaneous supplies, plus screwdriver (used to remove hardware)



Waverly Inspirations Fabric

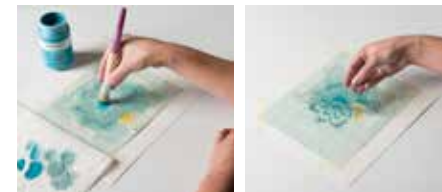
GARDEN INSPIRED WALL ART

by Suzanne Cook

When combining Waverly Inspirations beautiful fabric selections with exciting Waverly Inspirations stencil designs, instantly, beautiful works of art can be created in an afternoon! Design and color choices are only limited to your imagination!

INSTRUCTIONS

1. Begin by first designing the layers of both the wood canvas panels (by size) and the coordinating Waverly Inspirations fabrics (by colors and patterns); then cut fabric squares 3" larger than each wood canvas panel they will cover.



1

2

2. The top layer of each pair of fabric coordinates will be stenciled. Working one top layer of fabric at a time, secure the fabric to a firm work surface using stencil tape. Position the stencil where desired and secure with stencil tape. NOTE: each stencil design can be positioned directly in the center of the fabric square or off center so that the design seems to flow off the edges of the panel once wrapped.

TIPS & TRICKS

- To achieve clean, crisp stenciled design edges when stenciling on fabrics, be sure to stencil against a firm yet smooth work surface; secure fabric to that work surface too so that it does not shift during stenciling.
- When stenciling a design using many colors of paint, it is advisable to have one stencil brush per color of paint.
- For decorative purposes, like this trio of canvas panels, it is not necessary to pre-wash Waverly Inspirations fabrics.
- This project offers many design possibilities. Change the shape of the wood canvas panels, change the choices of Waverly Inspirations fabric coordinates, and change the colors of Waverly Inspirations Chalk and an entirely different look and feel can be achieved!

3. Pour a small amount of each of the Waverly Inspirations Chalk colors onto a foam plate. Load a Waverly Inspirations Stencil Brush with one color then offload excess paint onto a paper towel. Begin stenciling each design using a circular clockwise/counter clockwise motion as follows:
 - 10" x 10" wood canvas panel - 12" x 12" Waverly Inspirations Décor Stencil - Floral. Stencil flower petals Agave blending to Peacock. Stencil flower center Curry then highlight with Maize. Stencil the leaves Fern and the stems Hazelnut. Allow to dry.
 - 6" x 6" wood canvas panel - 6" x 6" Waverly Inspirations Décor Stencil - Floral Ornate. Stencil flower petals Agave blending into Peacock. Stencil the base Curry and highlight with Maize. Allow to dry.
 - 4" x 4" wood canvas panel - 6" x 6" Waverly Inspirations Décor Stencil - Floral Ornate. Stencil the entire design Peacock. Allow to dry.
4. Wrap all Waverly Inspirations fabrics over the wood canvas panels and secure to the backside using a staple gun. For added interest, allow some of the stenciled designs to flow onto the sides.
5. Layer each fabric panel; secure in place using hot glue.



SUPPLIES

- Wood Canvas Panel - 1 - 12" x 12", 2 - 10" x 10", 2 - 6" x 6", and 1 - 4" x 4"
- Waverly Inspirations Fabrics - 3 styles - 1/2 yard each
- Waverly Inspirations Chalk - Agave, Peacock, Hazelnut, Fern, Curry, Maize
- 12" x 12" Waverly Inspirations Décor Stencil - Floral
- 6" x 6" Waverly Inspirations Décor Stencil - Floral Ornate
- Waverly Inspirations Stencil Brush Set
- Refer to page 4 for miscellaneous supplies, plus staple gun, hot glue gun, glue sticks, and fabric scissors

WAVERLY INSPIRATIONS SUPER PREMIUM PAINT

Waverly Inspirations Super Premium Paints are formulated as highly pigmented paints that offer amazing coverage. Developed with many home decorating projects in mind, these paints brush-on smoothly with even coverage.

Super Premium Paint dries to a beautiful semi-gloss, durable finish making it the perfect paint for heavily-used home décor projects. It can be used on surfaces such as: wood, tin, terra cotta, canvas, papier mache, plaster, rigid plastic, cement and even Styrofoam. Projects using fabric, glass and glazed ceramics should be used as decorative-only projects because the paint will not be permanent on these surfaces.

Waverly Inspirations Super Premium Paints is so durable it can also be used both indoors and outdoors. No additional sealers or varnish is required.

Available in a wide variety of colors and manufactured in both 2, or 8 oz. wide mouth bottles, Waverly Inspirations Super Premium paint colors were chosen to coordinate with all Waverly Inspirations fabrics. Therefore, the coordination of home decorating projects incorporating both fabric and paint is a snap! If desired, Super Premium Paints can be intermixed to create custom colors too.

Waverly Inspirations Super Premium Paint can be used alone as a base color or it can be stenciled, sponge painted or used for embellishments and hand painted decorative flourishes.

When applied as a smooth, even coat, Waverly Inspirations Super Premium Paint will dry to the touch very quickly, however, it is advisable to allow one hour between applications. Super Premium Paint decorated surfaces will be cured 24 hours after the last paint application.



WAVERLY INSPIRATIONS SUPER PREMIUM PAINT

- On trend color palette of 54 colors inspired by Waverly Inspirations Fabrics.
- Highly-pigmented, lower-viscosity formula provides amazing, easy-to-brush smooth surface coverage.
- Wide mouth bottle allows for easy brush load/application.
- Dries to a durable, semi-gloss finish perfect for furniture and other home décor projects.
- Can be used on indoor and outdoor surfaces and is fade resistant.
- Can be inter-mixed to create new color.



- Great for use on wood, tin, terra cotta, canvas, papier mache, plaster, cement and Styrofoam. Fabric and glass surfaces should be used as decorative only.
- Clean up while wet with soap and water.
- Can be used for stenciling using Waverly Inspirations stencils.
- No priming, sanding or stripping prior to painting is required.
- Non-toxic, water based
- Made in America.





Waverly Inspirations Fabric

1950'S SECRETARY GOES MODERN by Plaid Design Inspiration Team

Revamping any thrift store furniture find can easily be accomplished when using Waverly Inspirations Super Premium paints. They are highly pigmented, provide great coverage, and dry to a gorgeous durable satin finish. The wide variety of colors available, make any furniture refurbishing project a delight! The additional touch of Waverly Inspirations fabric as a lining to the display section of this thrift store secretary not only offers an element of surprise, it also is a soft backdrop for favorite collectables to be displayed against.

INSTRUCTIONS

- Using a screwdriver, remove all drawer and door pull hardware creating a smooth surface for painting. Set hardware aside.
- Clean the previously finished surface with household glass cleaner to remove dust, dirt or grease deposits.
- Pour a small amount of Waverly Inspirations Super Premium - Elephant into a foam bowl as a palette or load a Waverly Inspirations Basecoating Brush directly from the wide mouth paint bottle.
- Apply Elephant to the entire exterior surface of the secretary desk using long, smooth brushstrokes. Also paint all hardware Elephant and allow to dry. (photo 1) Clean the basecoating brush with soap and water then allow both the brush and the painted secretary desk to thoroughly dry approximately one hour.
- Following the same instructions, paint a coat of Waverly Inspirations Super Premium - Silver Lining to the interior of the secretary desk including the wood shelves (photo 2). Allow to dry one hour.
- If needed, lightly sand the painted surfaces smooth removing all unnecessary texture of uneven paint application or messy brushstrokes using a fine grit sandpaper.
- Reapply an even, second application of Elephant and Silver Lining over the entire secretary desk for opaque coverage. Allow to thoroughly dry, approximately 1 hour.
- Using a ruler or yardstick, measure the interior back of the display section of the secretary. Cut Waverly Inspirations fabric to match measurements.
- Brush an even, liberal amount of Mod Podge Matte onto the interior back of the secretary. Press the precut fabric into the wet Mod Podge; smooth out wrinkles, press the fabric into corners and along edges. Be sure to release any captured air bubbles. (photo 3) Mod Podge will serve as glue to attach the fabric to the secretary. Allow 20 minutes to dry. If desired, a topcoat of Mod Podge can be brushed over the fabric. Allow to thoroughly dry.
- Replace all hardware, set the adjustable shelf to the desired height and add your favorite collectables!



1

2

3

TIPS & TRICKS

- Use stencil or painter's tape as a helpful aid to evenly apply paint where the two colors may meet along the edges of the slant, drop leaf desk.
- Sometimes, it may be easier to seal the backside of fabric with Mod Podge first before cutting to size. Simply brush Mod Podge over the entire back of the fabric and allow to dry. When dry, the fabric can be cut to size or applique designs can be cut from the fabric without producing frayed edges.
- Waverly Inspirations Super Premium dries to a gorgeous semi-gloss, durable finish which requires no topcoat or sealing coat of varnish making this the perfect home décor paint for projects that will receive lots of use.



SUPPLIES

- Thrift store mahogany slant front secretary desk
- Waverly Inspirations Super Premium - Elephant
- Waverly Inspirations Super Premium - Silver Lining
- Waverly Inspirations Basecoating Brush
- Mod Podge Matte
- Waverly Inspirations Fabric
- Refer to page 4 for miscellaneous supplies, plus fabric scissors and a screwdriver (used to remove hardware)



Waverly Inspirations Fabric

BRIGHT AND BOLD DRESSER by Plaid Design Inspiration Team

When decorating a room, it's nice to add an element of surprise or a bright pop of color. This thrift store find, an old Duncan Phyfe chest of drawers, provides that surprise element: that bright pop of color when refurbished with Waverly Inspirations Super Premium Acrylic Paints! Don't you love how the paint colors coordinate so well with the chosen Waverly Inspirations fabric sewn dresser scarf? The easy-to-follow instructions below will help you recreate an accent pop of color in your home!

INSTRUCTIONS

1. Using a screwdriver, remove all drawer pull hardware creating a smooth surface for painting. Set hardware aside until all painting is completed. Remove drawers from chest to paint separately.
2. Clean the previously finished surface with household glass cleaner to remove dust, dirt and grease deposits.



1

2

3. Pour a small amount of Waverly Inspirations Super Premium - Crimson into a foam bowl as a palette or simply load a Waverly Inspirations Basecoating Brush directly from the paint bottle.
4. Brush Crimson onto the entire exterior of the chest except for the horizontal routed edges above and below each drawer opening on the front of the chest. (photo 1) Apply a coat of Crimson to the drawer fronts as well. Be sure to clean the basecoating brush with soap and water. Allow the Crimson painted areas to thoroughly dry, approximately one hour.

5. As a bright accent, paint the remaining horizontal routed edges Pumpkin. Allow to dry one hour.
6. If needed, lightly sand to smooth out any rough areas, then reapply additional coats of both Crimson and Pumpkin until opaque coverage is achieved. (photo 2) Be sure to allow ample dry time between applications of color.
7. Replace all drawers and add drawer pull hardware.

WAVERLY INSPIRATIONS FABRIC DRESSER SCARF by Karen Reif

1. Cut two sections of Waverly Inspirations fabric 2" larger than both the desired width and length of the dresser scarf.
2. Place right sides of the fabric together; then pin in place on all sides.
3. Sew both pieces together using a 1/2" seam allowance on all sides being sure to leave an opening on one short side for turning the dresser scarf right side out. Clip all four corners, then turn the dresser scarf inside out. Stitch opening closed and press flat removing wrinkles and pressing seams.



SUPPLIES

- Thrift store find - Duncan Phyfe chest of drawers
- Waverly Inspirations Super Premium - Crimson
- Waverly Inspirations Super Premium - Pumpkin
- Waverly Inspirations Basecoating Brush
- Waverly Inspirations Fabric - (amount to be determined by width of dresser and length of desired dresser scarf)
- Refer to page 4 for miscellaneous supplies, plus screwdriver (used to remove hardware), fabric scissors, iron, sewing machine and thread



BEFORE

TIPS & TRICKS

- If you are unsteady with your paint application techniques, a simple trick to follow when painting two colors side by side is to use painter's tape. Simply tape along the desired edge, paint one color allow it to thoroughly dry - perhaps overnight, then carefully tape over it to paint the second color.
- Allow ample time for the paint to cure before using the sewn dresser scarf and decorating the top of the chest of drawers.
- No need to use a foam bowl palette when painting from an 8 fl. oz. bottle of Waverly Inspirations Super Premium paint. A brush can be loaded directly from the paint bottle wide mouth.



Waverly Inspirations Fabric

MADE WITH LOVE PILLOWS

by Suzanne Cook

Who doesn't love a custom stenciled message? It is so easy to create using Waverly Inspirations Alphabets stencils and Super Premium Paints. Create these fabulous romantic messages or your own favorite words like "live, laugh, love," or "dream, believe, inspire!" Personalization has never been easier!

INSTRUCTIONS

1. Working one pillow front at a time, lay one piece of the precut linen fabric on a smooth work surface. Secure fabric to work surface by taping in place.
2. Measure the fabric and lightly mark the 12" center point with a pencil. Determine the desired placement of each letter then position a piece of stencil tape the width of the pillow top. This horizontal tape line will determine the base of each letter to be stenciled.



1

2

3

3. While keeping equal space between all letters, position each letter stencil and secure in place with stencil tape.

4. Working one word, one color at a time stencil the words, "KISS," "HUGS," and "LOVE." Using a dry brush technique, load a Waverly Inspirations Stencil Brush with Waverly Inspirations Super Premium - Crocus by dipping the stencil brush into a small puddle of paint; offload excess paint onto a paper towel. Begin stenciling using a circular clockwise/counter-clockwise motion until the entire design area has been stenciled. (photo 1) Lift to reveal the design and allow the paint to dry before aligning the next letter. (photo 2) Continue until the entire word "LOVE" has been stenciled. (photo 3) Repeat stenciling techniques to stencil a Peacock "KISS" and a Lemon-Lime "HUGS." Allow to thoroughly dry.
5. To assemble a pillow, lay a stenciled word face down onto the backing fabric. Match right sides of the fabric together and pin in place matching fabric edges.
6. Sew a simple straight stitch using a 1/2" seam allowance around all four sides leaving an opening at the bottom of the pillow. Clip corners and turn the fabric right side out. If needed, press with an iron. Fill pillow with polyester fiberfill then hand stitch the opening closed.

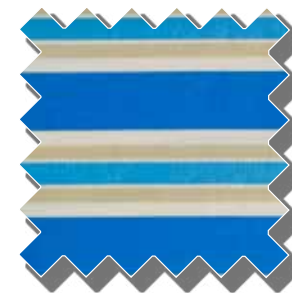
TIPS & TRICKS

- Make sure the work surface you stencil against is smooth and without bumps or ridges as those design lines may transfer when stenciling.
- A cool tip to know to extend the life of a paper stencil ... before using the paper stencil the first time, take a few moments to spray seal both sides of each stencil with clear acrylic sealer. This will provide additional stability to the stencil and make it easier to wipe the stencil clean immediately after each use.
- If using a premade pillow, remove pillow form or stuffing and lay a sheet of waxed paper or parchment paper inside the pillow between layers of fabric for protection before stenciling.
- Waverly Inspirations Super Premium Acrylic paints should only be used on fabrics for decorative purposes only, or surfaces that will not require laundering.



SUPPLIES

- Linen fabric cut 24" x 14" - qty 3 pieces
- Coordinating Waverly Inspirations Fabric - 23" x 14" - 3 cuts (for pillow backing)
- Waverly Inspirations Super Premium - Lemon Lime
- Waverly Inspirations Super Premium - Peacock
- Waverly Inspirations Super Premium - Crocus
- Waverly Inspirations Stencil Brush Set
- 5" Waverly Inspirations Paper Alphabet Stencil Pack - Alpha Basic
- Refer to page 4 for miscellaneous supplies, plus tracing paper, straight pins, fabric scissors, polyester fiberfill, sewing machine and thread



Waverly Inspirations Fabric

APOTHECARY STYLE SIDE TABLE

by Karen Reif

Polka dot designs bring a light, airy, fun and contemporary feel to what they decorate. This apothecary style side table is no exception. When combining youthful polka dots with bright Waverly Inspirations Super Premium paints, this project is a sure winner for any room in your home!

INSTRUCTIONS

1. Create a smooth painting surface by removing all drawer pull hardware using a screwdriver and set aside.
2. Next, lightly sand smooth any rough areas of the unfinished wood side table. Wipe with a tack cloth to remove sanding dust.
3. Pour a small amount of Waverly Inspirations Super Premium - Bermuda into a foam bowl as a palette or load a Waverly Inspiration Basecoating Brush directly from the paint bottle.
4. Brush on a coat of Bermuda to the entire surface of the side table including all drawer fronts. (photo 1) Allow to dry one hour.



1

2

3

5. If necessary, lightly sand smooth any rough areas where the wood grain may have been raised by the application of paint. Apply a second coat of Bermuda for opaque coverage. Clean the basecoating brush with soap and water then allow both the brush and the painted side table time to thoroughly dry.

6. Working with all drawers inserted, find the center and lightly mark with a pencil. Next, position the center of the Waverly Inspirations Polka Dot stencil over the furniture center and secure in place with stencil tape.
7. Pour a small amount of Waverly Inspirations Super Premium - White onto a foam plate. Load a Waverly Inspirations Stencil Brush with paint then offload excess paint onto a paper towel. Begin stenciling using a circular clockwise/counter clockwise motion over the stencil design. (photo 2) Lift the stencil then reposition it to complete stenciling the entire drawer fronts as well as the support dividers. (photo 3) Allow to dry.
8. Replace all drawer pull hardware. No need to apply a sealer or coat of varnish, as Waverly Inspirations Super Premium paints dry to a durable satin finish that is self sealing

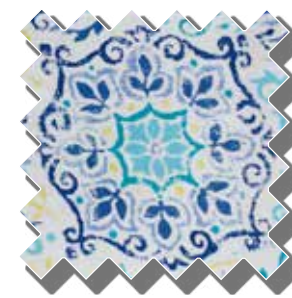
TIPS & TRICKS

- When repeating a stencil design, always check the backside of the stencil for paint residue before realigning it to the next area. If necessary, wipe the backside of the stencil with a baby wipe or moist paper towel.
- Keep stencils clean between uses by immediately cleaning with soap and water after each use or wipe down well with rubbing alcohol or hand sanitizer.



SUPPLIES

- Unfinished wood apothecary style side table
- Waverly Inspirations Super Premium - Bermuda
- Waverly Inspirations Super Premium - White
- Waverly Inspirations Basecoating Brush
- 12" x 12" Waverly Inspirations Decor Stencil - Polka Dot
- Waverly Inspirations Stencil Brush Set
- Refer to page 4 for miscellaneous supplies, plus screwdriver (to remove drawer pull hardware)



Waverly Inspirations Fabric

TOWN AND COUNTRY NIGHT STAND by Plaid Design Inspiration Team

The simple-to-create added detail of Waverly Inspirations fabric wrapped knobs not only adds interest to this nightstand, it also is just plain fun! This project is a delight to the eyes when you see the contrast of two different paint sheens. Created by using both Waverly Inspirations Chalk which dries to a velvety smooth matte finish, and Super Premium paints that dry to a soft semi-gloss finish this project is truly stunning. Experiment for yourself and have fun!

INSTRUCTIONS

- Using pliers, remove all drawer pull knobs creating a smooth surface for painting. Set aside hardware.
- Clean the previously finished surface with household glass cleaner to remove dust, dirt or grease deposits.
- Pour a small amount of Waverly Inspirations Chalk - Ivory into a foam bowl as a palette or load a Waverly inspirations Chalk Brush directly from the paint bottle.
- Apply the paint to the sides, top, drawer and door fronts using long, smooth brushstrokes. (photo 1) Clean the chalk brush with soap and water then allow both the brush and the painted nightstand time to thoroughly dry, approximately two hours.
- If necessary, lightly sand smooth any rough areas where the wood grain may have been raised by paint application
- Reapply a second coat of both paints for opaque coverage. Allow to dry.
- Measure the width of drawer and door knobs then cut a circle measuring 1 1/2" larger than the knob from coordinating Waverly Inspirations fabric.
- Brush on an application of Mod Podge Matte to the backside of the fabric, then cover the knobs making sure the fabric wraps around the knob and to the backside. Pinch to seal and allow to dry.
- Brush an application of Mod Podge over fabric knob to seal and protect. (photo 3) Trim excess fabric. Then reattach knobs to drawer and door fronts.



1

2

3

- While the chalk painted areas are drying, load a Waverly Inspirations Basecoating Brush with Waverly Inspirations Super Premium - Agave, then paint the face of the nightstand (minus the drawer and door fronts) plus the front legs. (photo 2) Allow to dry.

TIPS & TRICKS

- When painting two different colors of paint next to each other, it may be easier to use painter's tape or stencil tape to assist in keeping straight lines of color.
- Add a pop of interest to this nightstand, by Mod Podging a fabric liner to the drawer and/or cabinet portion of the nightstand.
- The fun of this project is enjoying the sheen difference between the matte finish of Waverly Inspirations Chalk and the semi-gloss finish of Waverly Inspirations Super Premium.
- Although there is no need to apply a finish to the Super Premium painted areas, if desired, the chalk areas can be sealed with Waverly Inspirations Clear Wax.



SUPPLIES

- Thrift store find - nightstand with storage
- Waverly Inspirations Super Premium - Agave
- Waverly Inspirations Basecoating Brush
- Waverly Inspirations Chalk - Ivory
- Waverly Inspirations Chalk Brush
- Waverly Inspirations Fabric
- Mod Podge Matte
- Refer to page 4 for miscellaneous supplies, plus pliers (to remove drawer knobs)



BEFORE

WAVERLY INSPIRATIONS MULTI-SURFACE PAINTS

Waverly Inspirations Multi-Surface Paints are premium, high-performance paints specially formulated for use on most surfaces such as: wood, tin, ceramic, glass, terra cotta, canvas, rigid plastic, papier mache, plaster, cement, Styrofoam and fabric.

Available in three different finishes: High Gloss, Glitter and Metallic, Waverly Inspirations Multi-Surface Paints are favorites of DIY users because they provide professional looking results each and every time!

This paint formula is designed so that it can be used alone as a base color, or it can be used creatively to be stenciled, sponge painted or even used to add a partial color block as an accent on any home decor project. Home decorating has never been easier.



Waverly Inspirations Multi-Surface Paints are engineered so they can be used indoors or outdoors. When properly cured, they are permanent on glass and ceramics. And when thoroughly heat set to fabrics, Waverly Inspirations Multi-Surface Paints can be gently washed. And what is best, there is no need to topcoat paint decorated surfaces with a sealer or varnish.

Waverly Inspirations Multi-Surface Paints are available in a 2 fl. oz. wide mouth bottle making it easy to load paintbrushes and applicators directly from the bottle without a mess.

WAVERLY INSPIRATIONS MULTI-SURFACE PAINTS

- Waverly Inspirations Multi-Surface paints provide color palette inspiration making home décor projects easy to accomplish.
- Available in three finishes, High Gloss, Metallic and Glitter.
- Packaged in a wide-mouth, 2 fl. oz. bottle for easy brush application.
- Can be used on indoor and outdoor surfaces.
- Perfect for multiple surfaces such as: wood, metal, fabric, glass, ceramics, canvas, papier mache, plastic, plaster and Styrofoam.
- Once properly cured to glass and ceramics, it is either hand washable or top shelf dishwasher safe.
- Dries to a beautiful self-sealing finish, no need to apply varnish or sealer.
- After heat setting, artwork or stenciled designs are permanent on fabric.
- Can be intermixed within the same finish, ex.: High Gloss with High Gloss, Glitter with Glitter or Metallic with Metallic to create customized colors.
- Can be used on porous and non-porous surfaces. No need to prime or seal.
- Clean up with soap and water while wet.
- Non-toxic, water based
- Made in America.

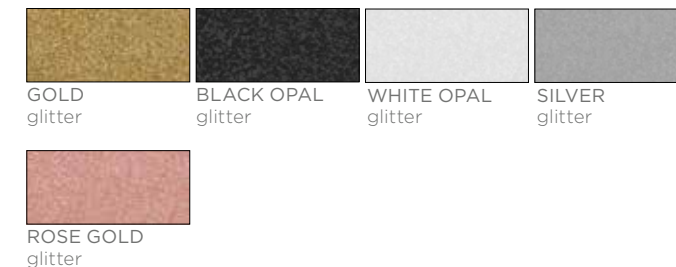
WAVERLY INSPIRATIONS MULTI-SURFACE HIGH GLOSS PAINTS

Available in a 14 beautiful colors, Waverly Inspirations Multi-Surface High Gloss Paint, is the perfect paint for most surfaces. With its superior coverage, gorgeous high shine, durable finish and packaged in a convenient 2 fl. oz. bottle, this paint formula is perfect for many smaller home decor projects.



WAVERLY INSPIRATIONS MULTI-SURFACE GLITTER PAINTS

Want to add a touch of glitz, glamour and sparkle to any everyday home décor project? Waverly Inspirations Multi-Surface Glitter Paint is the best paint for the job. Available in five vibrant glitter filled colors, these paints sparkle to the max! For added charm undercoat with Waverly Inspirations Multi-Surface Metallic Paints in a similar hue.



WAVERLY INSPIRATIONS MULTI-SURFACE METALLIC PAINTS

The high-style trend of painted metallic finishes will never go out of style. With Waverly Inspirations Multi-Surface Metallic Paint, available in nine different metallic finishes, any surface can be transformed into a glowing metallic finish. Whether painting an entire project surface or only an accent area, any DIY decorating enthusiast can easily create a shimmery effect.





Waverly Inspirations Fabric

SLEEK CONTEMPORARY END TABLE

by Karen Reif

The High Gloss formula of Waverly Inspirations Multi-Surface Paint is perfect when brushed on furniture requiring a modern look. Not only is the paint finish durable, the high sheen is sleek which provides a modern twist to an old piece. But what makes this revamped piece of furniture special, is the combined use of Mod Podge and Waverly Inspirations Fabric to line the drawers. The lined drawers add just the right finishing touch!

INSTRUCTIONS

1. Using a screwdriver, remove all drawer pull hardware and set aside.
2. Clean the previously finished surface with household glass cleaner to remove dust, dirt or grease deposits.
3. Pour a small amount of Waverly Inspirations Multi-Surface High Gloss Paint - Ocean into a foam bowl as a palette or load a Waverly Inspirations Basecoating Brush directly from the paint bottle.



1

2

3

4. Apply Ocean to the entire exterior surface of the two drawer end table using long, smooth brushstrokes and allow to dry. (photo 1) Clean the basecoating brush then allow both the brush and the painted side table to thoroughly dry, approximately one hour.
5. If needed, lightly sand the painted surface smooth.
6. For opaque coverage reapply an even application of Ocean. (photo 2) Allow to thoroughly dry, approximately 1 hour.
7. Using a ruler, measure the interior of each drawer. Cut Waverly Inspirations fabric to match these measurements.
8. Working one drawer at a time, brush a liberal amount of Mod Podge Matte onto the interior of the drawer. (photo 3) Press the precut fabric onto the wet Mod Podge; smooth out wrinkles, press the fabric into the corners and along edges, release any captured air bubbles and wipe away any excess Mod Podge. The Mod Podge will serve as the glue to attach the Waverly Inspirations fabric to the interior of each drawer. Allow 20 - 30 minutes to dry and although not necessary, if desired, a topcoat of Mod Podge can be brushed over the fabric in place. Allow to thoroughly dry.
9. Replace all hardware. (Refer also to project photo on page 30.)

TIPS & TRICKS

- High gloss finishes always appear nice when the surface is smooth to begin with. If needed, lightly sand smooth any rough areas using a fine grit sandpaper prior to painting and between paint applications. Remember to wipe away sanding dust before applying the next coat.
- When painting with Waverly Inspirations Multi-Surface High Gloss paint, it is best to always paint using a light touch using long, smooth brushstrokes. Allow the paint to glide off the bristles of brush rather than pushing the paint onto the surface with pressure.
- A good way to measure and cut the Waverly Inspirations fabric for the interior of each drawer is to cut the sides separate from the bottom. Measure and cut approximately 1/2" "taller" than the height of the side measurement. When attaching the sides, allow the extra 1/2" to "flow" onto the base or bottom of the drawer. This trick will ensure complete fabric coverage should an accident happen and fabric be cut too small. Follow through by cutting and adding the bottom piece after the sides are in place. You may also find it easier to allow the sides to dry first before applying the bottom.



SUPPLIES

- Thrift store find - two drawer end table
- Waverly Inspirations Multi-Surface High Gloss Paint - Ocean
- Waverly Inspirations Basecoating Brush
- Mod Podge Matte
- Waverly Inspirations Fabric
- Refer to page 4 for miscellaneous supplies, plus fabric scissors and a screwdriver (used to remove hardware)



Waverly Inspirations Fabric

GLITZY SERVING TRAY

by Karen Reif

Glitter painted projects are NOT just for the holidays, any party or everyday occasion can be dressed up with this fun glittered tray. It is so easy to do! The winning combination of Waverly Inspirations Multi-Surface Metallic and Glitter Paints applied to this serving tray will have you feeling like royalty!

INSTRUCTIONS

1. Pour a small amount of Waverly Inspirations Multi-Surface Metallic - Golden into a foam bowl as a palette or simply load a Waverly Inspirations Basecoating Brush directly from the paint bottle.



1

2

2. Brush Golden onto the entire exterior of the unfinished wood tray except for the two handle insets. (photo 1)
3. Paint the inside of the handles Waverly Inspirations Multi-Surface High Gloss - Lagoon. Allow the painted areas to thoroughly dry, approximately one hour.

4. When dry if needed, lightly sand to smooth out any rough areas, then reapply additional coats of both Golden and Lagoon until opaque coverage is achieved. Be sure to allow ample dry time between applications of color.
5. Pour a small amount of Waverly Inspirations Multi-Surface Glitter - Gold onto the palette or load the same brush directly from the bottle. Apply the glitter paint onto all Metallic Golden areas. (photo 2) Allow to dry. Continue adding layers of Glitter Gold until the desired glitter effect is achieved. Allow to thoroughly dry.

TIPS & TRICKS

- The great thing about working with Waverly Inspirations Multi-Surface Paints is that they do not need to be sealed; both the Metallic and Glitter shine will remain for years to come.
- The best part is that the glitter is contained in the base of the paint, which means it will not flake or rub onto your hands while handling this tray.
- When applying Waverly Inspirations Multi-Surface Glitter Paints, hold the brush at a 45 degree angle to the surface and allow the glitter paint to flow from the brush. A heavier application of glitter paint will appear. Allow ample dry time between applications.
- Be careful not to over brush Waverly Inspirations Multi-Surface Glitter Paint during the application process as glitter particles may move to one area rather than in an over all pattern
- With the variety of Waverly Inspirations Multi-Surface Metallic and Glitter Paints available, it is easy to create a tray for any occasion using any color combination.



SUPPLIES

- Unfinished wood tray
- Waverly Inspirations Multi-Surface High Gloss Paint - Lagoon
- Waverly Inspirations Multi-Surface Metallic Paint - Golden
- Waverly Inspirations Multi-Surface Glitter Paint - Gold
- Waverly Inspirations Basecoating Brush
- Refer to page 4 for miscellaneous supplies



Waverly Inspirations Fabric

METALLIC FINISH CANDLESTICKS

by Suzanne Cook

Waverly Inspirations Multi-Surface Metallic Paints mean just what the name implies; paints formulated with a beautiful, metallic sheen that can be applied on wood, glass, ceramic, and metal surfaces to name a few. (Refer to the “before” photo.) This collection of candlesticks featuring different surfaces originally, are united in style once painted with Waverly Inspirations Metallic paints. They offer a rich, warm glow to any table scape.

INSTRUCTIONS

1. Begin by cleaning each glass, ceramic or metal candlestick with rubbing alcohol to prepare the surface for paint. Unfinished wood candlesticks do not require any cleaning.
2. Determine the color placement for each candlestick, painting as desired, one color per candlestick or for interest, divide the candlestick into two or more colors.



1

2

3. Wrap stencil tape around the candlestick to divide painted bands of color.
4. For opaque coverage, each candlestick was painted in multiple applications allowing each one to thoroughly dry before painting the next coat. (Photos 1 and 2) Refer to the color photograph for color placement inspiration.



SUPPLIES

- Collection of candlesticks - wood, glass, ceramic, metal in a variety of shapes and sizes.
- Waverly Inspirations Multi-Surface Metallic - Silver
- Waverly Inspirations Multi-Surface Metallic - Black Opal
- Waverly Inspirations Multi-Surface Metallic - Moonstone
- Waverly Inspirations Multi-Surface Metallic - Rose Quartz
- Waverly Inspirations Multi-Surface Metallic - Copper
- Waverly Inspirations Multi-Surface Metallic - Sunstone
- Waverly Inspirations Chalk - Curry
- Waverly Inspirations Basic Brush Set
- Refer to page 4 for miscellaneous supplies, plus rubbing alcohol.

BEFORE



TIPS & TRICKS

- Painting with metallic colors can be a bit tricky and will show brush marks if you are not careful. Be sure to paint using smooth strokes, light pressure and a brush that is NOT overloaded with paint.
- Achieve hide in color quickly by first basecoating a surface with a similar non-metallic color before painting metallic; ex.: paint Waverly Inspiration Multi-Surface High Gloss - Elephant before painting Metallic Silver.
- Waverly Inspirations Multi-Surface Paints require no varnish or spray finishes.

DESIGNERS

Julie Lewis has been a designer and crafter for over 25 years with a BFA in graphic design. She never seems to run out of creative inspiration when surrounded daily by amazing people. Her experience working within an eclectic list of industries has helped to hone her creative approach to work and life. Greeting cards, industrial advertising, toys, graphic design, and the craft industry, to name a few, have afforded Julie the opportunity to bring unique talents to her satisfying job as a designer and design manager at Plaid Enterprises, Inc.

Karen Reif, a native of Pittsburgh, PA, has lived in the Atlanta, GA, area for 25 years. Her love of crafting began at an early age with learning to knit from her grandmother; and through the years, has progressed to other art forms. She currently enjoys the creative environment of working at Plaid Crafts as a freelance crafter and designer.

Suzanne Cook has been an artist and crafter since she was a child. She received her BFA from the University of Georgia in graphic design. Suzanne's creative roles have included designer, art director, middle school teacher, theater costume and set designer, and painter. A Georgia native, she lives in Suwanee with her husband Dave and their little three-legged dog, Rosie. Suzanne loves her current role as one of Plaid's Inspiration Designers where she can draw on all of her many artistic skills every day. She says, "I have the ultimate dream job!"

CONNECT WITH PLAID'S SOCIAL MEDIA

Every day, Plaid reaches tens of thousands of crafters, makers and DIY enthusiasts through all our social media channels.

While visiting Plaid's social channels, you will find creative, innovative projects that will inspire you. Projects that will instill in you the desire to join in the fun, by recreating one of these projects or perhaps by creating an original one of your own!

You can also join in our daily conversations across the variety of social media platforms and become a part of the Plaid community. Simply tag your comments and creations #PlaidCrafts.

Won't you join the fun and follow us today! Learn about the new products, try a new crafting technique, and become inspired by viewing our vast offering of easy-to-create artistic projects.

Sign up for our newsletter:

plaidonline.com/craft-newsletter-signup.aspx

Visit Waverly at:

waverlyinspirations.com/

Waverly Inspirations "Be Inspired":

waverlyinspirations.com/be-inspired/



Check out the Plaid Palette Blog:
plaidonline.com/blog



Follow us on Pinterest:
pinterest.com/plaidcrafts
pinterest.com/waverlyinsp/



Like on Facebook:
facebook.com/InspiredByPlaid
facebook.com/Waverly/?fref=ts



Follow us on Twitter:
twitter.com/plaidcrafts
twitter.com/inawaverlyworld



Watch Plaid on YouTube:
youtube.com/plaidcrafts



Follow us on Instagram:
instagram.com/plaidcrafts
instagram.com/inawaverlyworld/



Follow Plaid on Google+:
plus.google.com/+PlaidOnline